

FOR LEASE

13421 Old Meridian St
Carmel, IN 46032



PROPERTY DETAILS



- 2nd floor medical office suite available - 3,273 SF



- Freestanding medical office building - 50,726 RSF



- High visibility - Located directly across from Ascension St. Vincent Hospital, just off US-31



- Located in Indiana - Licensed by the State of Indiana, Medicare Certified and accredited by the AAHC



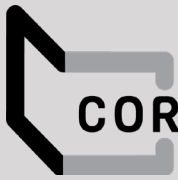
- Situated within a modern surgical center - Includes operating rooms with advanced technology



CONTACT

Charles Yeo, CPM
Senior Vice President
317.358.7021
CYeo@cciin.com

Cornerstone Companies, Inc.
cornerstonecompaniesinc.com



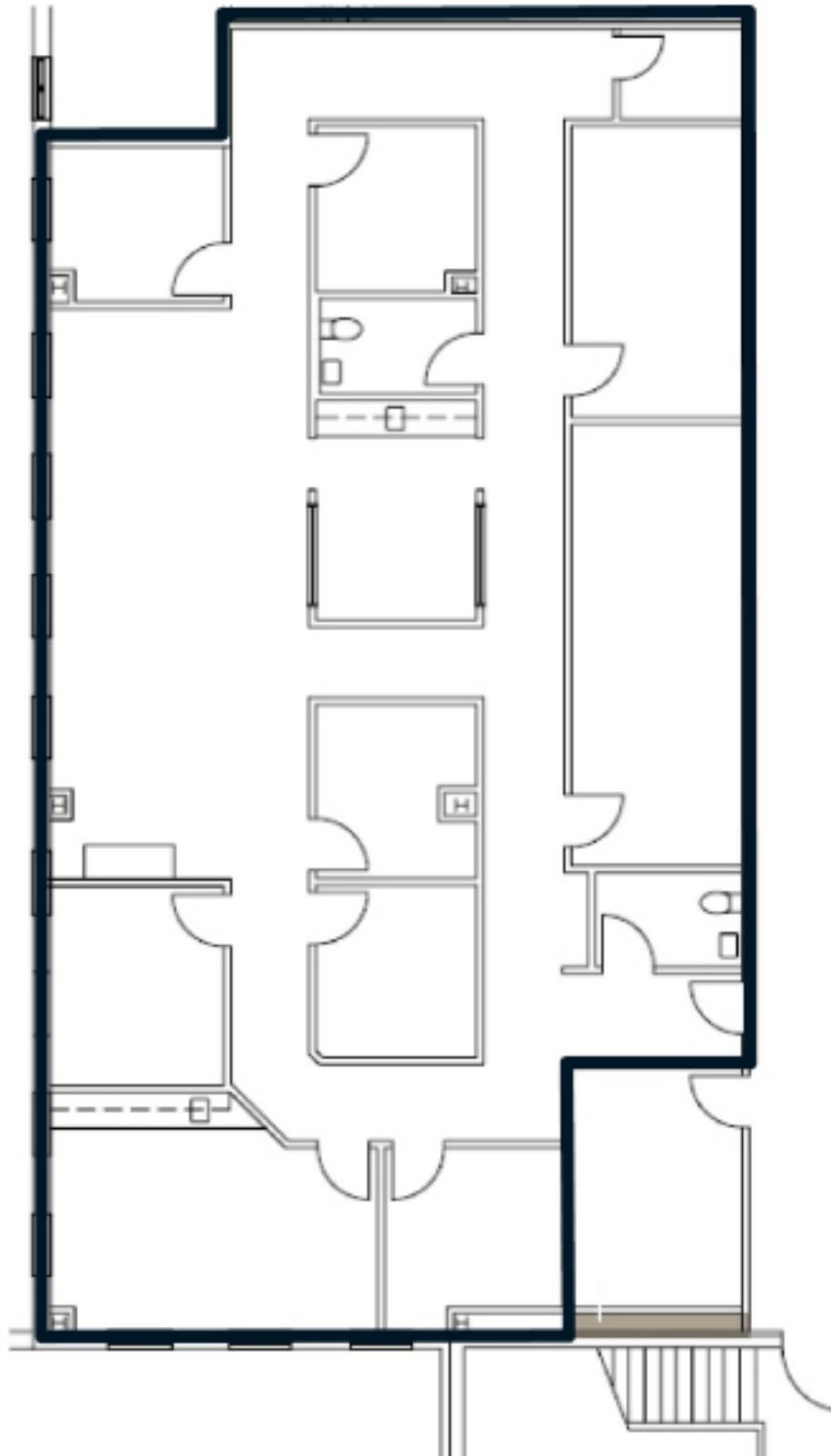
CORNERSTONE

FLOOR PLAN

13421 Old Meridian St
Carmel, IN 46032



Suite Available | 3,275 SF





13421 OLD MERIDIAN ST

Google

DEMOGRAPHICS (3-mile radius)



72,881

Population



40

Median Age



28,863

Households



\$103,892

Average Household Income



CORNERSTONE



CONTACT

Charles Yeo, CPM
Senior Vice President
317.358.7021
CYeo@cciin.com

Cornerstone Companies, Inc.